

LOT 4
MAP # 6-13-0-4-0
GPIN 6833-42-5570
ZONED M-2

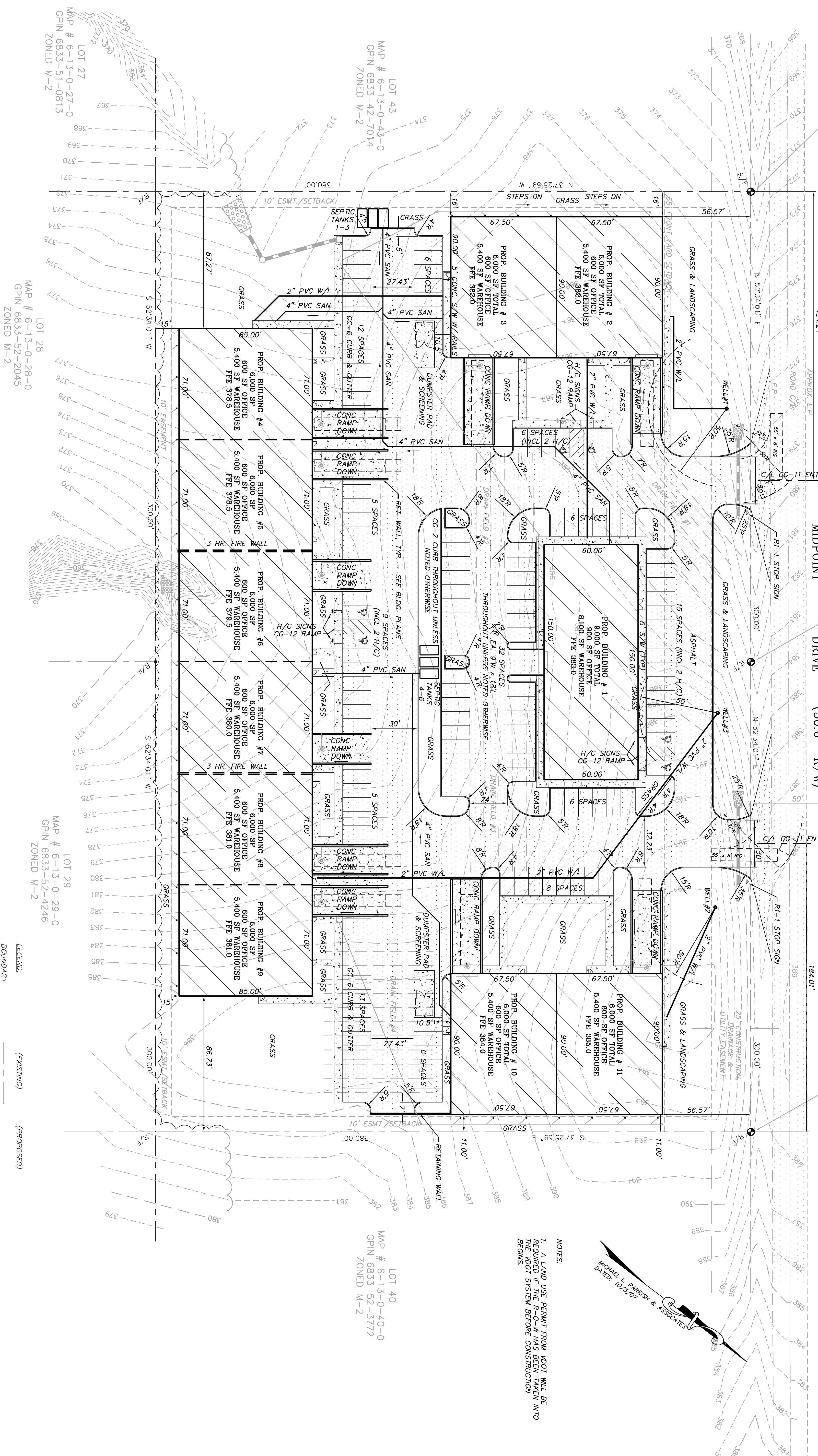
LOT 5
MAP # 6-13-0-5-0
GPIN 6833-42-8715
ZONED M-2

LOT 6
MAP # 6-13-0-6-0
GPIN 6833-52-0917
ZONED M-2

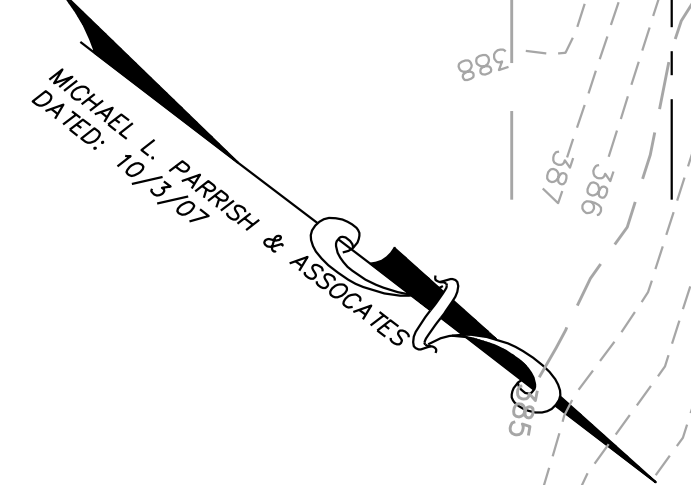
BENCHMARK #3
TOP OF ROD
ELEV. = 371.22'

BENCHMARK #2
TOP OF ROD
ELEV. = 382.90'

BENCHMARK #1
TOP OF ROD
ELEV. = 388.55'

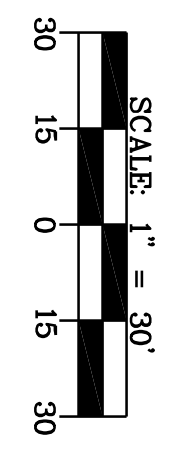


NOTES:
1. A LAND USE PERMIT FROM VDOT WILL BE REQUIRED IF THE R-O-W HAS BEEN TAKEN INTO THE VDOT SYSTEM BEFORE CONSTRUCTION BEGINS.



LEGEND:

(EXISTING)	(PROPOSED)
BOUNDARY	BOUNDARY
ADJACENT PARCEL	ADJACENT PARCEL
EASEMENT	EASEMENT
1" CONTOUR	1" CONTOUR
5" CONTOUR	5" CONTOUR
RCF REINFORCED CONCRETE PIPE	RCF REINFORCED CONCRETE PIPE
WATER LINE	WATER LINE
SANITARY SEWER	SANITARY SEWER
DRAINFIELD LINE	DRAINFIELD LINE
ASPHALT	ASPHALT
BUILDING	BUILDING
CONCRETE	CONCRETE



DATE: JAN. 14, 2008
DESIGNED BY: CRH
DRAWN BY: CRH
CHECKED BY: BSH
SCALE: 1" = 30'
REVISIONS: APR. 9, 2008 MAY 12, 2008

NORTHSTAR DEVELOPMENTS, INC.
GOOCHLAND COUNTY, VIRGINIA
LAYOUT & UTILITY PLAN

HULCHER & ASSOCIATES, INC.
CONSULTING ENGINEERS
5901 LAKESIDE AVENUE
RICHMOND, VIRGINIA 23228
(804) 262-7622 * FAX: 262-8215

COMMONWEALTH OF VIRGINIA
BRUCE S. HULCHER
Lic. No. 2255
Professional Engineer

JN. 0729